



**FUGITIVE DUST CONTROL PLAN
DUNKIRK GENERATION STATION
106 POINT DRIVE NORTH
DUNKIRK, NEW YORK**

PREPARED FOR:
Dunkirk Power, LLC
Dunkirk, New York

PREPARED BY:
GZA GeoEnvironmental of New York
Buffalo, New York

October 2015
GZA File No. 21.0056757.01

TABLE OF CONTENTS

Page

1.0 INTRODUCTION1

2.0 FACILITY DESCRIPTION.....2

 2.1 Process Overview2

 2.1.1 Dunkirk Solid Waste Management Facility.....2

 2.1.2 Fly Ash Handling3

 2.1.3 Bottom Ash Handling3

 2.1.4 Transport Roadways.....4

3.0 FUGITIVE DUST CONTROL REGULATORY REQUIREMENTS4

 3.1 CCR Rule Air Criteria.....4

 3.2 Other Fugitive Dust Requirements.....5

 3.2.1 Title V Operating Permit.....5

 3.2.2 Dunkirk Solid Waste Management Permit6

4.0 FUGITIVE DUST CONTROL PRACTICES AND PROCEDURES.....7

 4.1 Fly Ash Handling7

 4.1.1 Monitoring8

 4.1.2 Recordkeeping.....8

 4.2 Transport Roadways.....9

 4.3 Dunkirk Solid Waste Management Facility9

 4.4 Annual Reporting10

5.0 PROCEDURES FOR CITIZEN COMPLAINTS.....10

6.0 PROCEDURES FOR PLAN ASSESSMENTS AND AMENDMENTS11

7.0 POINT OF CONTACT12

8.0 PROFESSIONAL ENGINEER CERTIFICATION12



FIGURE 1 – Locus
FIGURE 2 – Site Plan

REVISION LOG



Date of Review	Reviewer Name	Amendment Required (YES/NO)	Sections Amended and Reason
October 2015	Kevin Schroeder, NRG Daniel Troy, GZA	N/A	Original Plan

1.0 INTRODUCTION



On December 19, 2014, the administrator of the United States Environmental Protection Agency signed the Disposal of Coal Combustion Residuals (“CCR”) from Electric Utilities final rule (“the Rule”). The Rule was published in the Federal Register on April 17, 2015 and becomes effective on October 19, 2015. The Rule establishes a comprehensive set of requirements for the disposal of CCR in landfills and surface impoundments at coal-fired power plants under Subtitle D of the Resource Conservation and Recovery Act. These requirements include compliance with location restrictions, design criteria, operating criteria, groundwater monitoring and corrective action, and closure and post-closure care aspects. The operating criteria include air criteria specified in Title 40 of the Code of Federal Regulations (“CFR”), §257.80 to address the potential pollution caused by windblown dust from CCR units. According to the Rule, owners or operators of CCR units must adopt measures that will effectively minimize CCR from becoming airborne at the facility by developing and operating in accordance with a fugitive dust control plan (“Plan”) with adequate dust control measures.

Dunkirk Power LLC (“Dunkirk”) is a coal-fired power plant located in Dunkirk, New York. The Rule applies to this facility due to the disposal of CCR that is generated from the combustion of coal at the site. CCR units associated with the station operations include the Dunkirk Solid Waste Management Facility (“Dunkirk SWMF”). The locations of both facilities are shown on the attached Figure 1 – Locus Plan.

This Plan has been prepared to comply with the requirements as specified in §257.80(b)(1-7) of the Rule, including certification by a professional engineer as documented in Section 7.0 of this Plan. Additionally, this Plan will be placed in the Dunkirk facility’s operating record per §257.105(g)(1), noticed to the State Director per §257.106(g)(1), and posted to the publicly accessible internet site per §257.107(g)(1).

Control of fugitive dust and comprehensive air quality monitoring are important aspects of daily activities at the Dunkirk Site and associated SWMF located on Van Buren Road in Pomfret, New York. This document outlines procedures to establish and maintain an onsite dust control program as required by CCR Rule (40 CFR 257.80). Onsite dust monitoring is conducted in general accordance with the requirements of the New York State Department of Environmental Conservation Air Title V Facility Permit and Solid Waste Management Permit.

2.0 FACILITY DESCRIPTION

2.1 Process Overview



Fly ash generated from the electrical generation plant is stored in a storage silo. Prior to transportation to the SWMF the fly ash is treated in a pugmill with “haulage”, a wet application to prevent the fly ash from solidifying during transport. The volume of waste generation of the fly ash is dependent on the electrical generation demands of the Plant and therefore can vary. Eventual loading of the fly ash into dump trucks occurs in a drive-through bay door beneath the storage silo.

A bottom ash material is also sluiced to a hydrobin where it is directly loaded into trucks for disposal.

Additionally, other potential sources of dust generation at the facility include paved roads adjacent to the ash loading areas and exposed working face or placement areas of the facilities nearby landfill.

The normal travel areas along paved in-plant access roads and the paved and unpaved haul roads within the landfill are maintained as necessary by wetting, using water trucks during dry, windy periods. Figure 2 illustrates the internal paved and unpaved roads that will routinely be wetted.

Additional steps to reduce generation of dust at the Dunkirk site and associated SWMF include reducing vehicle speeds and ceasing work activities during strong wind events (sustained winds greater than 25 mph).

If necessary, Dunkirk Plant employees can hose down the dump trucks as needed prior to their transporting waste ash to the landfill to remove residual ash accumulations. Truck rinsing is mainly done within the ash silo loading containment.

2.1.1 Dunkirk Solid Waste Management Facility

The Dunkirk SWMF is located approximately five miles south of the Dunkirk station proper on Van Buren Road in the Town of Pomfret, New York. The SWMF has been identified as an existing CCR landfill according to the Rule. CCR materials including fly ash and bottom ash are transported by tarped trucks from the station to the ash disposal site where they are dumped and then spread and compacted with a bulldozer.



2.1.2 Fly Ash Handling

Fly ash is generated from coal combustion in the boiler and is removed from the gas stream through a baghouse, then pneumatically conveyed to a fly ash silo for storage. At Dunkirk fly ash from Units 1 & 2 can be unloaded from the silo by either wet or dry methods. Fly ash from Units 3 & 4 can only be unloaded wet. Fly ash loading activities into dump trucks for delivery to the nearby landfill is generally part of routine activities although is dependent on the rate of electrical generation demands of the Plant. A primary process in the generation of the fly ash is the pretreatment application in a pug mill of “haulage” which is blended with the ash in a wet form to prevent the ash from solidifying prior to disposal. From this silo, the ash is pneumatically conveyed to a pugmill where it is wetted to 10 to 15 percent moisture, mixed, and loaded into tarped trucks in a drive-through bay door beneath the storage silo for transport to the SWMF. In addition, fly ash can be loaded dry by utilizing a concentric discharge boot to fill tankers, where the outside of the boot sucks the displaced air out the truck and vents it back into the silo. The filled tankers are hosed down with water to remove any ash before they leave the site. These procedures must be used when filling every tank truck to minimize re-entrainment.

If needed to control potential dusting, the loading area is equipped with hoses to wet down the area and rinse vehicles to remove periodic ash accumulations.

2.1.3 Bottom Ash Handling

Compared to fly ash, bottom ash is a heavier, coarser material that falls to the bottom of the boiler. From the ash hopper underneath the boiler, bottom ash is sluiced to the hydrobin where the ash settles out and is loaded wet into dump trucks. The dewatered ash is transported via tarped trucks to the Dunkirk SWMF.

Additionally, other potential sources of dust generation at the landfill facility include unpaved roads adjacent to the ash disposal working face.



2.1.4 Transport Roadways

As described above, trucks transport conditioned fly ash and bottom ash to the SWMF. Within the limits of the Dunkirk station the trucks travel on paved roads. Once outside the station, the public roadways are paved including the initial portion into the ash disposal landfill site. The internal roadways and haul routes are shown on Figure 2 of this Plan.

The normal travel areas along paved in-plant access roads and haul roads within the landfill are to be maintained as necessary by wetting using water trucks during dry, windy periods.

Additional steps to reduce generation of dust at the Dunkirk Plant and Landfill include reducing vehicle speeds and ceasing work activities during strong wind events (sustained winds greater than 25 mph).

Wheel wash stations are currently not required for use at the Site as the generated ash typically has sufficient moisture content due to application of “haulage” (fly ash pretreatment) which reduces its potential to become airborne. If necessary, Dunkirk Plant employees can rinse off dump trucks as needed prior to their transporting waste ash to the SWMF to remove residual ash accumulations. Truck rinsing is done within the ash silo loading containment area.

3.0 FUGITIVE DUST CONTROL REGULATORY REQUIREMENTS

3.1 CCR Rule Air Criteria

Under the Rule, the owner or operator of a CCR unit must adopt measures that will effectively minimize CCR from becoming airborne at the facility, including fugitive dust originating from CCR units, roads, and other CCR management and material handling activities. In order to document these measures, the owner or operator of the CCR unit must prepare and operate in accordance with a CCR fugitive dust control plan. According to §257.80(b), the Plan must include the following elements:

- Identification and description of the CCR fugitive dust control measures that will be used to minimize CCR from becoming airborne at the facility, along with an explanation of how the measures selected are applicable and appropriate for site conditions.



- Description of procedures used to emplace CCR as conditioned CCR at CCR landfills. (Conditioned CCR means wetting CCR with water to a moisture content that will prevent wind dispersal but will not result in the release of free liquids.)
- Description of procedures used to log citizen complaints received by the facility involving CCR fugitive dust events.
- Description of procedures to periodically assess the effectiveness of the Plan.

The Plan should be updated anytime there is a change in conditions that would substantially affect the written Plan. In addition to the fugitive dust control plan, §257.80(c) requires the owner or operator of a CCR unit to file an annual fugitive dust control report.

3.2 Other Fugitive Dust Requirements

Prior to the promulgation of the Rule, the Dunkirk and the SWMF have been required by other regulations and permits to minimize and monitor fugitive dust from the site.

3.2.1 Title V Operating Permit

The Dunkirk facility is operated according to New York State Air Title V Facility Permit ID: 9-0603-00021/00030. The permit incorporates fugitive dust emission requirements as codified in 6 NYCRR 211.

This permit authorizes the following regulated processes for Emission Unit U-00008:

Flyash is collected from the boiler exhaust by the baghouse and then pneumatically conveyed to the existing fly ash silo. The transport air and displaced air are exhausted from the silo through two baghouses and two emission points. The baghouses are in a parallel set up and can exhaust through either or both emission points.

The ash silo (EU U-00008) discharge points are subject to the nuisance requirements under 6 NYCRR Part 211.2 for fugitive emissions. The fugitive



emissions from ash handling must not contribute to a public nuisance or re-entrainment problem. The facility shall control fugitive emissions as follows:

1) Ash is removed from the fly silo by emptying it into either tanker trucks or dump trucks.

a) A concentric discharge boot is used to fill tankers, where the outside of the boot sucks the displaced air out the truck and vents it back into the silo. The filled tankers are hosed down with water to remove any ash before they leave the site. These procedures must be used when filling every tank truck to minimize re-entrainment.

b) To load a dump truck, the ash is mixed with water to ball it up. The discharge chute also extends down into the dump box. All dump trucks must be covered before they leave the site. These procedures must be used when filling every dump truck to minimize re-entrainment.

3.2.2 Dunkirk Solid Waste Management Permit

The facility is operated according to New York State Solid Waste Management Permit ID: 9-0658-00021/00008. The permit incorporates fugitive dust emission requirements as codified in 6 NYCRR 360. The following citations are relevant to fugitive emission restrictions:

Variance 2 from 6 NYCRR Part 360-2.17 (c) requiring daily cover is approved. The permitted shall limit the daily working area to 3 acres and use compaction equipment and dust suppression agents to prevent fugitive dust emissions and other nuisance conditions. In addition, the following requirements related to dust emissions are observed:

- Vehicle traffic is limited to 15 miles per hour within the ash disposal site.
- All trucks shall be covered with tarps to minimize dust emissions during transit.
- A water tank truck will be used as necessary to suppress dust on active disposal areas, roadways, and parking areas.

4.0 FUGITIVE DUST CONTROL PRACTICES AND PROCEDURES



Potential CCR fugitive dust sources have been identified and described in Section 2.0 of this Plan. This section will detail control measures employed at the facility to minimize airborne dust from these sources in accordance with §257.80(b)(1-2) of the Rule.

Site contractors and Dunkirk Plant operators are responsible for controlling their specific operations to minimize dust generation. This includes limiting or stopping operations during heavy dusting conditions, management and training procedures that limit employee exposure, and engineered measures that protect equipment operators working in the ash area.

Dust suppression activities in the Dunkirk Plant and SWMF areas are task-specific. The equipment that operates in the ash processing, or dry stacking areas (tanker or dump trucks, dozers, etc.) will be equipped with enclosed cabs that are air conditioned, heated and filtered. Inspections of door gaskets, air conditioning units, filters and other devices that seal the cabs will be periodically made to check that they are properly maintained and that the inside cab area is clean from ash buildup. Management and training procedures will be implemented to protect other personnel that work in the area (those that are not in equipment cabs).

Water trucks will be used for dust control wherever access allows as they are cost effective and do a satisfactory job of controlling the dust over the short-term, when needed. In general, the Dunkirk Plant and SWMF work areas do not require access roads through the ash with the exception of the SWMF working face. As part of routine maintenance, the Dunkirk access roads are maintained to be free of ash material to reduce the potential for generation of fugitive dust from construction vehicles.

4.1 Fly Ash Handling

Fly ash is generated from coal combustion in the boiler and is removed from the gas stream through a baghouse then pneumatically conveyed to a fly ash silo for storage. From this silo, the ash is pneumatically conveyed to a pugmill where it is wetted to 10 to 15 percent moisture, mixed, and loaded into tarped trucks for transport to the Dunkirk SWMF or loaded dry into tanker trucks for delivery to facility for beneficial reuse.



4.1.1 Monitoring

As per section 3.2.1, Title V Operating Permit under 6NYCRR Part 211. 3, observations of visible emissions from the fly ash handling activities are performed once per day during normal daylight operations. A trained employee records whether any emissions are observed and records the information in a logbook.

Airborne dust monitoring is ongoing at Dunkirk and the SWMF and is managed as part of regular routine maintenance. Due to the currently low potential for fugitive dust migration from power plant ash (due to grain size and pretreatment wetting practices) monitoring activities are limited to observations for visible dust clouds both at locations within Dunkirk and the nearby SWMF and at their respective perimeter locations.

The Site representatives responsible for dust control management will be notified immediately if plant or landfill activities results in visible generation of dust clouds. The designated individuals will have the authority to direct resources necessary to implement dust control measures. Onsite Dunkirk and SWMF personnel are directed to notify the designated individuals for visual observation of dust, which will require immediate attention. The daily site activities (and/or any other non-typical activity) that caused the dust emission will be ceased until a re-evaluation of dust control measures is completed and additional control measures implemented, if necessary.

An assessment of potential dust generation will be completed before starting new major site construction activity, such as excavation, processing, dredging, dewatering, or placement of landfill ash and landfill cap and cover. Appropriate modifications to dust control measures or personnel monitoring will be made based on specific activity assessment. A Dunkirk representative from the onsite environmental or safety and health group will observe any new activity as it starts up to provide feedback to field personnel and adjust dust control measures as necessary.

4.1.2 Recordkeeping

Ash handling records are maintained in logs completed by station personnel. The station maintains weekly records of visible emission observations of the fly ash

handling operations. The completed logs are forwarded to the station's Environmental Department and retained for at least five years.

4.2 Transport Roadways



Paved and unpaved road surfaces internal to the Dunkirk plant and the SWMF (refer to Figure 2) are watered to reduce fugitive dust emissions. The amount of time dedicated to watering the roads is a function of traffic and the dryness of the surface and is determined through daily observations by station personnel. The amount of water applied varies seasonally. Fugitive dust emissions are further controlled by posting and maintaining a maximum vehicle speed limit of 13 miles per hour (mph) within the boundaries of the station property.

All trucks exiting the station and carrying fly ash or bottom ash are equipped with tarping systems that are designed to provide an adequate seal and prevent windblown CCR emissions during transport. Drivers routinely inspect the tarping system for proper closure, tears, rips or any other defects that could contribute to excessive dust emissions during transport.

4.3 Dunkirk Solid Waste Management Facility

Fly ash and bottom ash are transported by tarped trucks from the station to the Dunkirk SWMF. Fugitive dust is minimized at the ash disposal site by spreading and compacting the materials with a bulldozer. Additionally, a water truck regularly circulates to spread water on the internal roadways and the open operating areas of the disposal site. Vehicle traffic operating within the disposal site is restricted to a 15 mph speed limit.

Due to the coarse-grained gradation of the power plant generated bottom ash and the high moisture content from the “haulage” pretreatment of the fly ash, the generation of dust at the nearby landfill facility is generally minimal. Once the ash is delivered and placed on the landfill working face, the ash is graded and compacted. In accordance with the landfill permit requirements, the SWMF is only allowed to operate an open work face area of 3 acres. Portions of the open landfill not receiving regular waste ash are either covered with a denser, daily cover material that will inhibit dust generation and that also acts as erosion control. Additionally, grasses or other temporary vegetation will be used at

the non-operational portions of the landfill in lieu of the final cover system to improve overall dust control and reduce erosion.



As ash placement activities are completed in a given area, the area will be graded to reduce any steep slopes and allow development of vegetative cover. Exposed ash surfaces will be seeded with temporary vegetation until final cap and cover are placed.

Alternative materials and methods for dust suppression, as well as alternative final vegetative cover or interim cover approaches, will continue to be analyzed to find ways to improve dust control, if necessary. It is anticipated that this effort will continue for the life of the project or specific cell closure.

4.4 Annual Reporting

In accordance with §257.80(c), the station must prepare an annual fugitive dust control report that includes the following information:

- A description of actions taken to control CCR fugitive dust
- A record of all citizen complaints
- A summary of any corrective actions taken

The first annual report must be completed no later than 14 months after placing the initial CCR fugitive dust control plan in the Dunkirk facility's operating record. Subsequent annual reports will be completed one year after the date of the initial annual report. Additionally, as required, the annual reports will be placed in the Dunkirk facility's operating record per §257.105(g)(2), noticed to the State Director per §257.106(g)(2), and posted to the newly established publicly accessible internet site per §257.107(g)(2).

5.0 PROCEDURES FOR CITIZEN COMPLAINTS

In accordance with §257.80(b)(3) of the Rule, this section outlines the procedure that Dunkirk follows to log citizen complaints involving fugitive dust events at the station and the ash disposal site. Within 24 hours of receiving a citizen complaint, the station's environmental coordinator will log the complaint in Dunkirk's Environmental Management Information System (EMIS) database. The EMIS database will automatically



forward notice of the complaint to the station manager, regional environmental manager, and the Corporate Environmental Department. Dunkirk will then conduct a thorough investigation. The results of the investigation will be recorded on a complaint log, entered into the EMIS database, and communicated to the appropriate parties. If the investigation confirms a fugitive dust emission event, Dunkirk will undertake a root cause analysis to address the source of the excess fugitive dust and will develop a plan to mitigate future occurrences and remediate impacts, as necessary.

Citizens can contact the Dunkirk Station directly at 716-366-0571.

6.0 PROCEDURES FOR PLAN ASSESSMENTS AND AMENDMENTS

Fugitive dust control practices for each source of CCR fugitive dust are described in Section 4.0 of this Plan. Based on current monitoring requirements and observations, these control measures have been determined to be effective. This Plan will be periodically reviewed by the station's environmental coordinator to ensure full compliance with all fugitive dust control, monitoring, and recordkeeping procedures as outlined herein. During this review, the Plan's effectiveness will be assessed as required per §257.80(b)(4) of the Rule. This review will serve to either confirm the continuing effectiveness of the Plan or will identify sections which require revision/upgrade to reflect any relevant changes in station operations, CCR unit aspects, or necessary improvements in fugitive dust control protocols.

Accordingly, when new processes or modifications of existing processes are planned, the station's environmental coordinator will evaluate the project for potential changes to this Plan. In accordance with §257.80(b)(6) of the Rule, the Plan will be amended to add any new CCR units or to update any modifications in the operation of existing fugitive dust sources. The amended Plan will be reviewed and recertified by a registered professional engineer and will be placed in the Dunkirk facility's operating record as required per §257.105(g)(1). The amended Plan will supersede and replace any prior versions. Availability of the amended Plan will be noticed to the State Director per §257.106(g)(1) and posted to the newly established publicly accessible internet site per §257.107(g)(1).

A record of Plan reviews/assessments is provided on the first page of this document, immediately following the Table of Contents.

7.0 POINT OF CONTACT

The following Dunkirk Plant personnel should be contacted with respect to dust suppression requirements and observations.



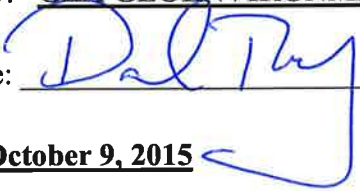
Regional Environmental Compliance Specialist
Dunkirk Power LLC
3500 River Road
Dunkirk, NY 14150
Office: 716-366-0571

8.0 PROFESSIONAL ENGINEER CERTIFICATION

The undersigned registered professional engineer is familiar with the requirements of §257.80 and has visited and examined the Dunkirk Station or has supervised examination of the facilities by appropriately qualified personnel. The undersigned registered professional engineer attests that this CCR Fugitive Dust Control Plan has been prepared in accordance with good engineering practice, including consideration of applicable industry standards and meets the requirements of §257.80, and that this Plan is adequate for the Dunkirk Station. This certification was prepared as required by §257.80(b)(7).

Name of Professional Engineer: **Daniel J. Troy, P.E.**

Company: **GZA GEOENVIRONMENTAL OF NEW YORK**

Signature: _____

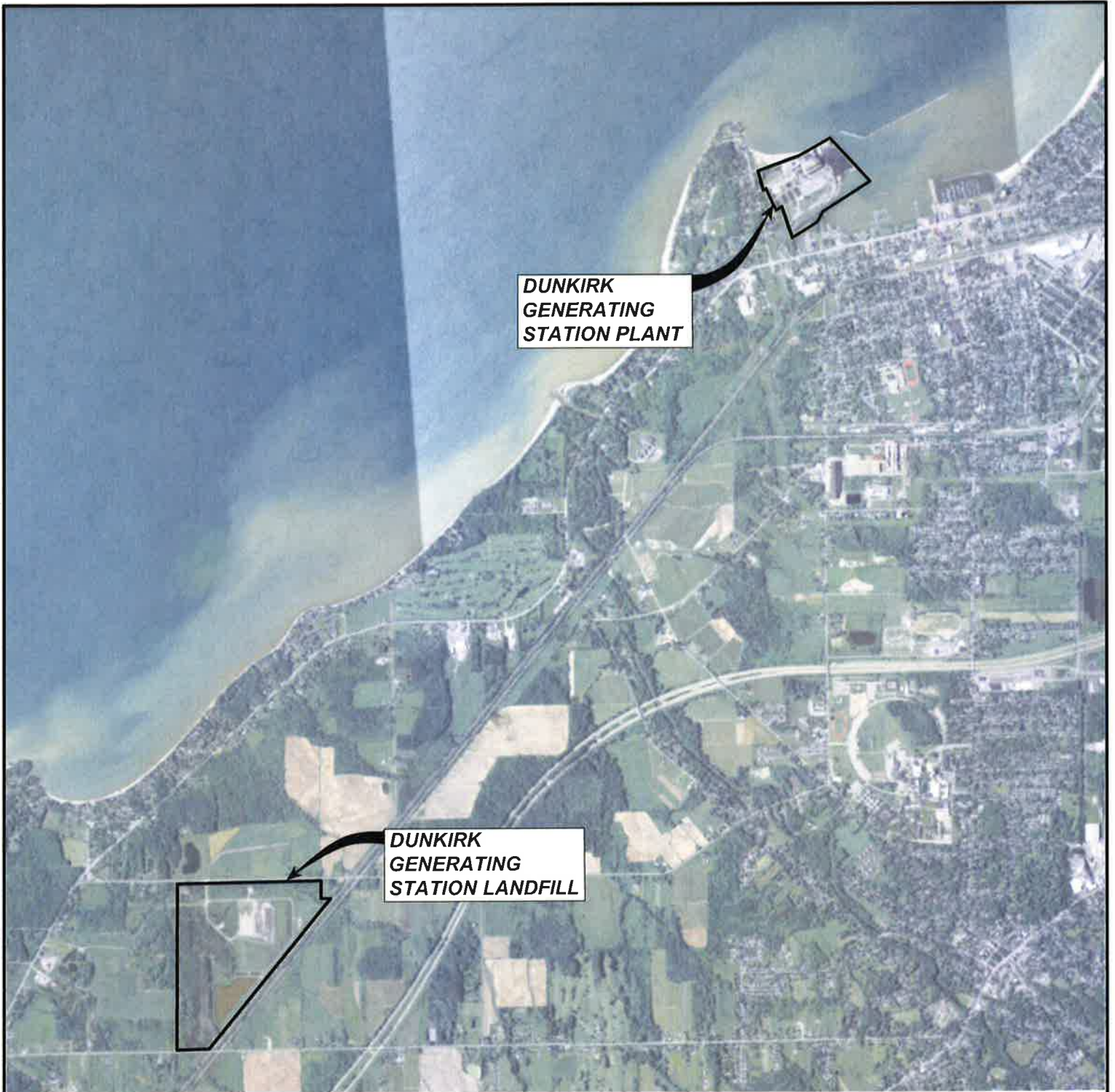
Date: **October 9, 2015**

PE Registration State: **New York**

PE Registration Number: **081139-1**

Professional Engineer Seal:

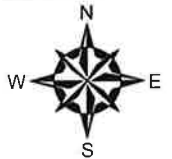
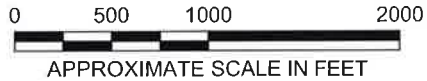





**DUNKIRK
GENERATING
STATION PLANT**

**DUNKIRK
GENERATING
STATION LANDFILL**

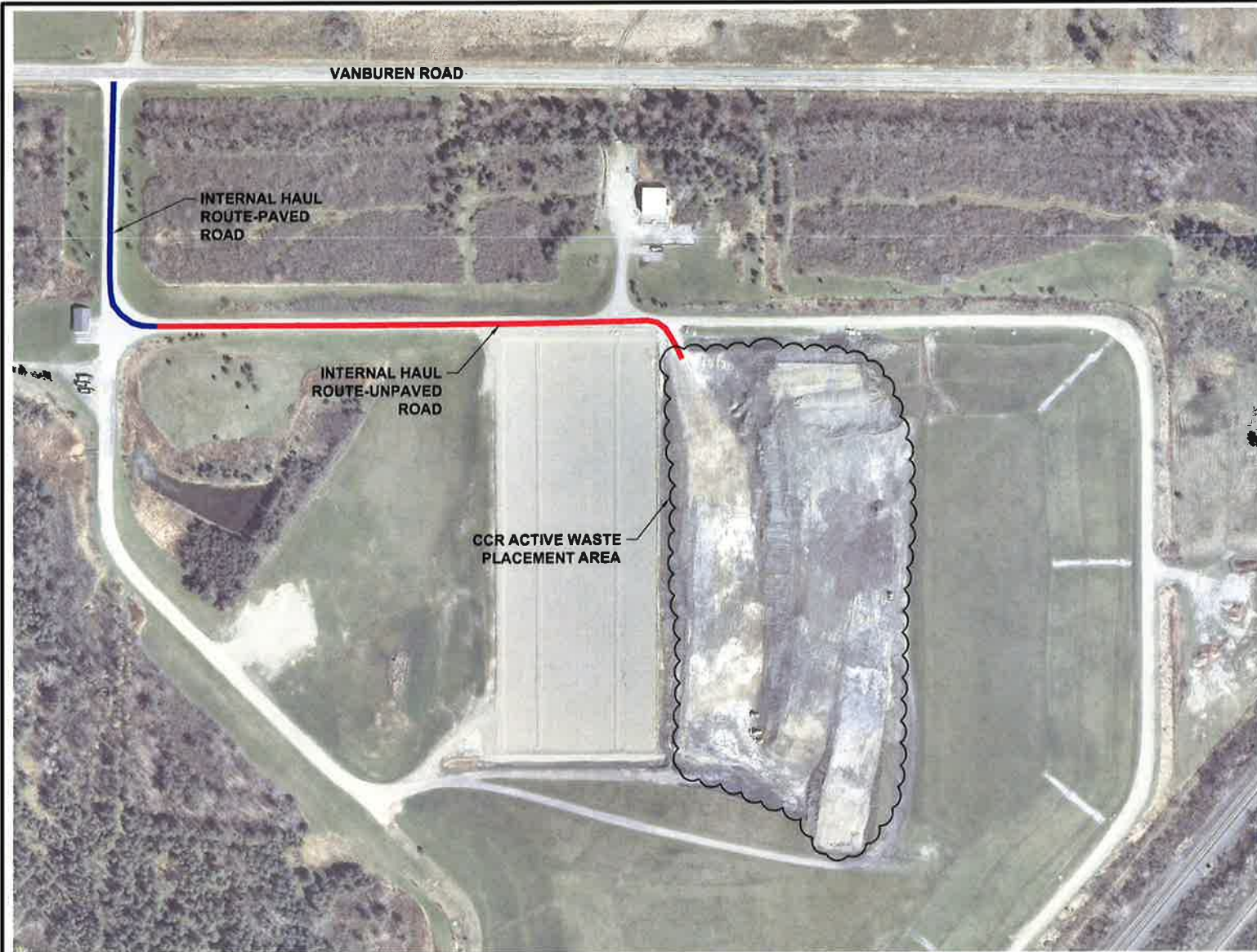
NOTE:
BASE MAP ADAPTED FROM AN AERIAL
PHOTOGRAPH DOWNLOADED FROM AN
ESRI PLUGIN FOR AUTOCAD



NO.	ISSUE/DESCRIPTION	BY	DATE

PREPARED BY:  GZA GeoEnvironmental of N.Y. Engineers and Scientists BUFFALO, NEW YORK 14203 (716) 685-2300		DUNKIRK GENERATION STATION 106 POINT DRIVE NORTH DUNKIRK, NEW YORK FUGITIVE DUST CONTROL PLAN LOCUS PLAN	FIGURE 1
PREPARED FOR: NRG DUNKIRK POWER, LLC			
PROJ MGR: DJT DESIGNED BY:	REVIEWED BY: DEW	CHECKED BY:	SCALE: AS SHOWN
DATE: OCTOBER 2015	PROJECT NO.: 21.0056757.01	REVISION NO.:	

UNLESS SPECIFICALLY STATED BY WRITTEN AGREEMENT, THIS DRAWING IS THE SOLE PROPERTY OF GZA GEOENVIRONMENTAL, INC. (GZA). THE INFORMATION SHOWN ON THE DRAWING IS SOLELY FOR USE BY GZA'S CLIENT OR THE CLIENT'S DESIGNATED REPRESENTATIVE FOR THE SPECIFIC PROJECT AND LOCATION IDENTIFIED ON THE DRAWING. THE DRAWING SHALL NOT BE TRANSFERRED, REUSED, COPIED, OR ALTERED IN ANY MANNER FOR USE AT ANY OTHER LOCATION OR FOR ANY OTHER PURPOSE WITHOUT THE PRIOR WRITTEN CONSENT OF GZA. ANY TRANSFER, REUSE, OR MODIFICATION TO THE DRAWING BY THE CLIENT OR OTHERS, WITHOUT THE PRIOR WRITTEN EXPRESS CONSENT OF GZA, WILL BE AT THE USER'S SOLE RISK AND WITHOUT ANY RISK OR LIABILITY TO GZA.



**DUNKIRK GENERATION
LANDFILL AREA**



**DUNKIRK GENERATION
PLANT AREA**

NOTES:

1. DIGITAL AERIAL ORTHO PHOTOGRAPHY ADAPTED FROM AN IMAGE DOWNLOADED FROM BING MAPS AND <http://www.orthos.dhSES.ny.gov/>.
2. THE SIZE AND LOCATION OF SITE FEATURES SHOULD BE CONSIDERED APPROXIMATE.

UNLESS SPECIFICALLY STATED BY WRITTEN AGREEMENT, THIS DRAWING IS THE SOLE PROPERTY OF GZA GEOENVIRONMENTAL, INC. (GZA). THE INFORMATION SHOWN ON THE DRAWING IS SOLELY FOR USE BY GZA'S CLIENT OR THE CLIENT'S DESIGNATED REPRESENTATIVE FOR THE SPECIFIC PROJECT AND LOCATION IDENTIFIED ON THE DRAWING. THE DRAWING SHALL NOT BE TRANSFERRED, REUSED, COPIED, OR ALTERED IN ANY MANNER FOR USE AT ANY OTHER LOCATION OR FOR ANY OTHER PURPOSE WITHOUT THE PRIOR WRITTEN CONSENT OF GZA. ANY TRANSFER, REUSE, OR MODIFICATION TO THE DRAWING BY THE CLIENT OR OTHERS, WITHOUT THE PRIOR WRITTEN EXPRESS CONSENT OF GZA, WILL BE AT THE USER'S SOLE RISK AND WITHOUT ANY RISK OR LIABILITY TO GZA.

NO.	ISSUE/DESCRIPTION	BY	DATE
DUNKIRK GENERATION STATION 106 POINT DRIVE NORTH DUNKIRK, NEW YORK FUGITIVE DUST CONTROL PLAN SITE LAYOUT AND POTENTIAL FUGITIVE DUST SOURCES			
PREPARED BY: GZA GeoEnvironmental of N.Y. Engineers and Scientists <small>535 WASHINGTON STREET 11th FLOOR BUFFALO, NEW YORK 14203 (716) 685-2300</small>		PREPARED FOR: NRG DUNKIRK POWER, LLC	
PROJ MGR:	DJT	REVIEWED BY:	CHECKED BY:
DESIGNED BY:		DRAWN BY:	DEW
DATE	OCTOBER 2015	PROJECT NO.	21.0056757.01
		REVISION NO.	
			FIGURE 2